

textile  
collection  
2020



this and that





this and that x anahita ginwala

## KAPUS

This and That in collaboration with Anahita brings to you a collection of organic cotton, khadi home textiles. The collection has been named Kapus, after the organically cultivated cotton all our products are made with. The cotton comes from the fields of Maharashtra and is handspun and handwoven into beautifully textured khadi fabrics, ranging from heavy to ethereal sheers in fine counts. The collection explores the basic elements of dot and line, bindu and rekha, in various configurations through hand block printing and other creative printing techniques. Our designs are also repositories of the flora we found along the way.

We have printed with real leaves from the Palash, Banyan, Bauhinia, Mulberry and Adoosa trees as well wild shrubs like Bordi and monsoon grass. The collection is rounded off with our quilted bed covers that have been painted with textured lines by hand using pigment and brushes. With age-old techniques such as block printing and natural dyeing assimilating beautifully with more experimental surfaces, we have created a range of textiles unique in texture and template.





TAT-BCKS-BR06 LAL PATTI LITI QUILTED BED COVER  
Sizes: King 105" x 105", Queen 84" x 84", Single 60" x 90"

## 'LITI' QUILTED BED COVERS

*'Inspired by the five natural elements of earth, water, air, fire and void, each bed cover is a restorative of the balance of nature'*



TAT-BCKS-BR01 KALI PATTI LITI QUILTED BED COVER  
Sizes: King 105" x 105", Queen 84" x 84", Single 60" x 90"



*'Evoking a sense of serenity, our indigo shaded bed covers are the perfect sanctuary from the outside world'*



TAT-BCKS-BR05 ASMANI LITI QUILTED BED COVER  
Sizes: King 105" x 105", Queen 84" x 84", Single 60" x 90"



TAT-BCKS-BR04 VADALI LITI QUILTED BED COVER  
Sizes: King 105" x 105", Queen 84" x 84", Single 60" x 90"





TAT-BCKS-BR02 LAL VADALI LITI QUILTED BED COVER  
Sizes: King 105" x 105", Queen 84" x 84", Single 60" x 90"

*'Our textured indigo and red bed covers are reminiscent of the horizon at sunset when the sea and sky become a single seamless expanse'*



TAT-BCKS-BR03 LAL VADALI PATTA LITI QUILTED BED COVER  
Sizes: King 105" x 105", Queen 84" x 84", Single 60" x 90"





'BINDU LITI' CUSHION COVERS

*'The polka dot in it's simplicity and balance will continue to inspire us to create classic designs that rejuvenate us'*



BINDU CHAAP AND BOBBY CUSHION COVERS  
 SIZES: 18" x 18" , 24" x 24"





SEEMA AND NAM CUSHION COVERS  
SIZES: 18" x 18", 24" x 24"



*'Linear patterns and textures soothe the mind and are quietly gratifying to see on any surface they adorn'*





*'Our bindu liti cushion covers, made with pure organic cotton khadi, are minimally designed and will breathe new life into your space'*



LITI TANKA CUSHION COVERS WITH NAM BINDU CUSHION COVER  
SIZES: 18" x 18", 24" x 24"





LAL, VADALI PHOOL CUSHIONS AND SHAM  
CUSHION SIZES: 18" x 18", 24" x 24", SHAM: 8" x 30"



*'The red hand printed flower is a quintessential piece of India's love affair with florals, from the Mughal Era, that we carry on with us'*



*'The rekha cushions are like bringing your favourite parts of the forest home with you and lend themselves to easy, organic living'*



REKHA CUSHION COVERS WITH LAL BINDU CUSHION COVER  
SIZES: 18" x 18", 24" x 24"





THE LEAF ARCHIVE

*'The leaf archive cushions, printed with indigenous flora from the forests of Maharashtra, are a celebration of the forest habitat and fertility of the earth'*



THE LEAF ARCHIVE CUSHIONS SIZE: 18" x 18"





1

2

3

- 1. PALAASH NAPKIN
- 2. BORDI NAPKIN
- 3. BINDU BUTI NAPKIN

KAPUS NAPKINS  
SIZE : 41CM X 41CM



LITI TABLE MAT 1  
14" X 20"



LITI TABLE MAT 2  
14" X 20"



LITI TABLE MAT 3  
14" X 20"

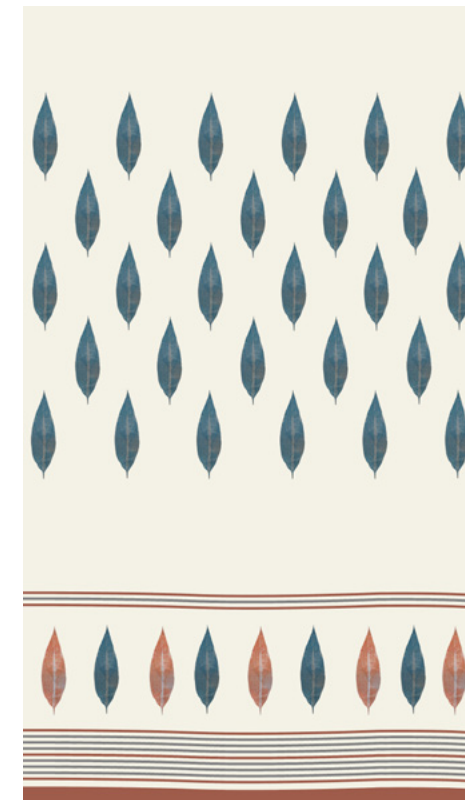


PAATRA CURTAINS

*'Bringing forth the inherent beauty of nature with our leaf impressions'*



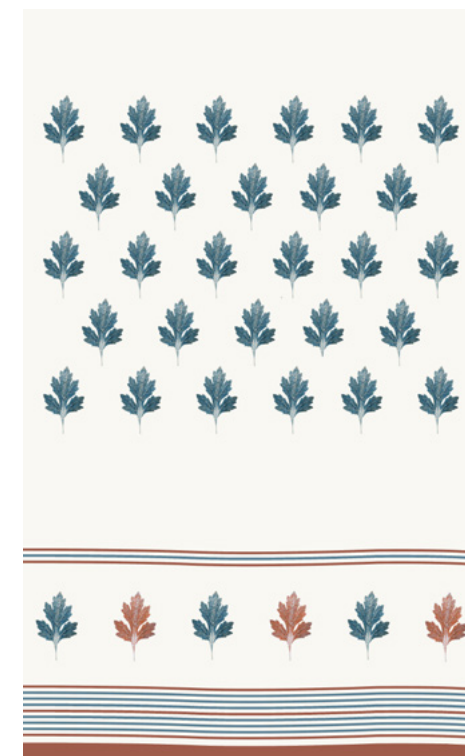
SHEVANTI IN INDIGO BLUE



ADOOSA IN INDIGO BLUE



ADOOSA IN GREY, MUSTARD & RED



SHEVANTI IN INDIGO BLUE



*'A world of seamless geometry rendered within each leaf's imprint'*



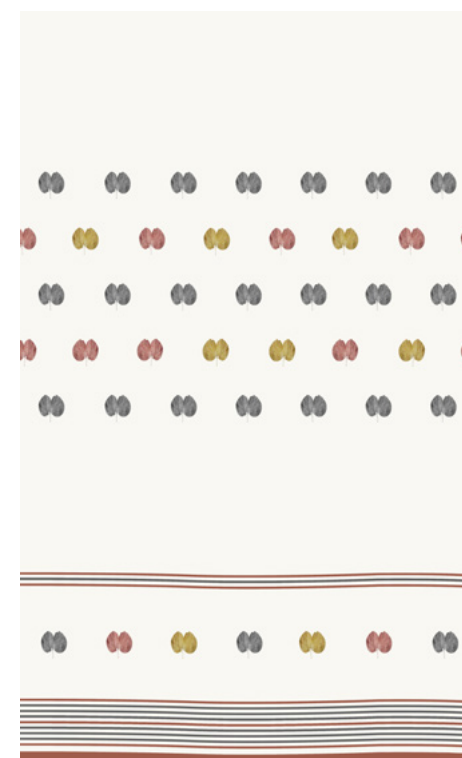
SHETUR IN RED, MUSTARD AND GREY



VAD IN INDIGO BLUE AND RED



SHETUR IN GREY, MUSTARD AND RED



KACHNAR IN GREY, MUSTARD & RED

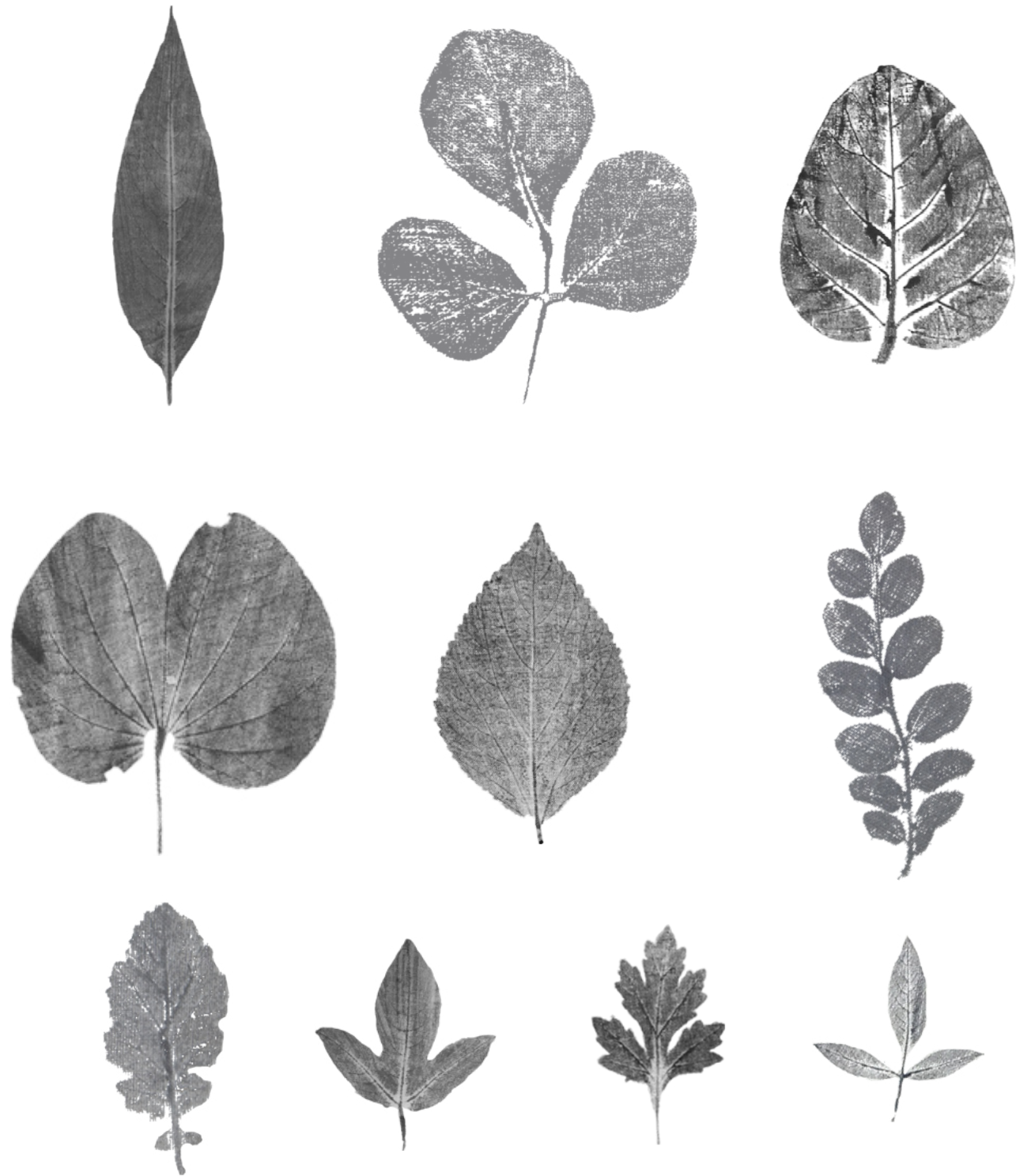




## The Process

*Our products are made from organically cultivated cotton which is handspun and handwoven into the most sumptuous khadi fabric, that is intrinsically fair trade. The textile is in itself so beautiful that each product is minimally designed using natural dyes and safe for the skin pigments. We have combined the age-old printing technique of block printing with experimental printing processes such as leaf printing and hand painting. The creation of these textiles is a community effort of farmers and artisans in the Indian state of Maharashtra, an age old cotton belt of the Subcontinent.*





## The Leaf Archive

*The Leaf Archive is the beginning of a small study of leaf morphology within a textile framework. Our foraging gave us a collection of three leaves that come from indigenous, wild trees, shrubs and monsoon weeds: the beautiful trifoliate leaf of the Palash Tree or the *Butea monosperma*, the long and thorny leaf of the Bordi shrub, also known as the *Ziziphus nummularia*, the serrated, tapering leaves of the cat's ear, a flatweed often seen in the monsoon, also known as *Hypochoeris radicata*. We have since included many more leaves to the archive such as the divine bifoliate leaf of the *Bauhinia variegata*, the Adoosa or *Justicia adhatoda*, Shevanti or the *Chrysanthemum* leaf, Mulberry leaves from the *Morus* plant. Immortalized in a muted grey, the beauty of each leaf impression remains a focus of the *The Leaf Archive* products.*



connect@thisandthat.in  
[www.thisandthat.in](http://www.thisandthat.in)

## mumbai

“Blue Loft”  
F-9 First Floor, Laxmi Wollen Mills,  
Shakti Mills Lane, Off Dr. E. Moses Road,  
Mahalaxmi, Mumbai-11  
Contact Details:  
+91-8861177182  
kahan@blueloft.com

## ahmedabad

“This and That”  
Contact Details:  
+91-9408531000, 9409631000  
connect@thisandthat.in