

textile  
collection  
2022



this and that





this and that x anahita

## kāpus

### Weaving design into craft

Crafted in collaboration with textile designer Anahita Ginwala, This and That's flagship home textile collection explores the joy of organic cotton and khadi. The Kāpus or cotton bud holds in it a history of this land and a world of possibilities. From ethereal sheers to textural fabrics, we celebrate the many facets of this natural yarn with minimal block and leaf printing, painting and embroidery. Choose from a range of quilted bedcovers, curtains, cushion covers, napkins and more, designed for the discerning home.

### Handcrafting a sustainable future

Made with organic non GMO cotton, the yarn for our textiles is handspun the traditional way and then handwoven into a true khadi. It is a fair collaboration between farmer, artisan and designer, drawing from generations of experience and contemporary thought. Made in Maharashtra, an age old cotton belt of India, the Kāpus fabric is cotton at its purest, with skin-safe natural dyes and pigments.

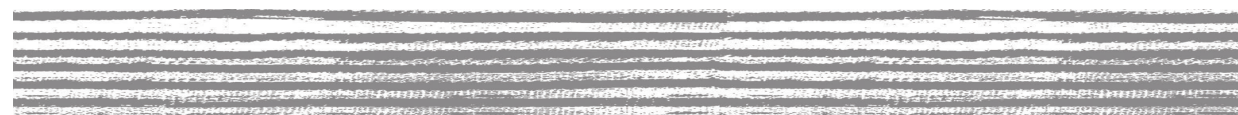


## HANDPAINTED TEXTILES



## ‘LITI’ QUILTED BED COVERS

*‘Capturing a sense of serenity in form and process, our painted textiles celebrate the hand of the maker. From the base fabric to the motifs, every element is mindfully handcrafted’*



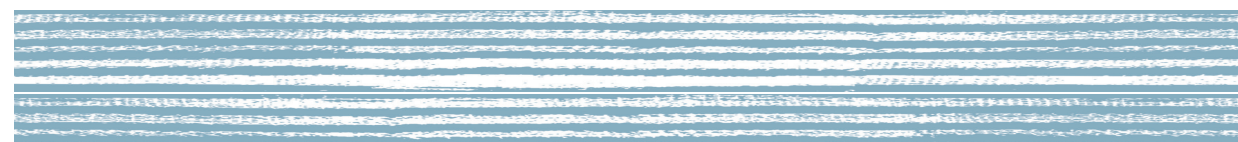
TNT/PL/02  
GREY PATTA LITI QUILTED BED COVER





TNT/FL/07  
ASMANI LITI QUILTED BED COVER

*‘With colours influenced by the natural elements, each bed cover is designed to be a unique restorative of balance in your space’*



TNT/FL/07  
ASMANI LITI QUILTED BED COVER





TNT/PL/12  
VADALI LITI PATTA QUILTED BED COVER

*‘Evoking a sense of calm, our Indigo shaded bed covers are the perfect sanctuary from the outside world’*



TNT/PL/12  
LAL VADALI PATTA LITI QUILTED BED COVER





TNT/FL/13  
NARANGI LITI QUILTED BED COVER

*‘Quiet and elegant, our linear patterns are designed to soothe the mind’*



TNT/FL/15  
YELLOW LITI QUILTED BED COVER





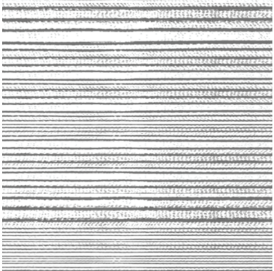
TNT/FL/09  
VADALI LITI QUILTED BED COVER



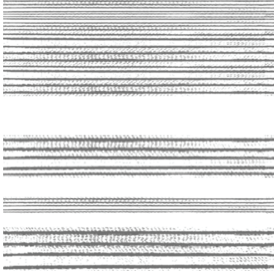
TNT/PL/20  
YELLOW, GREY AND INDIGO QUILTED BED COVER



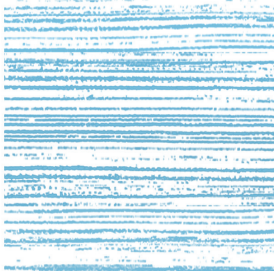
‘LITI’ HAND PAINTED BED COVERS



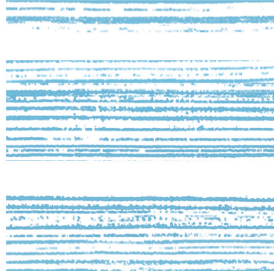
TNT/FL/01



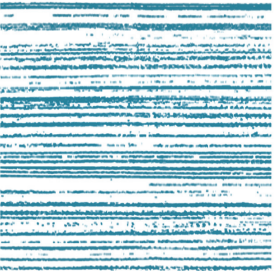
TNT/PL/02



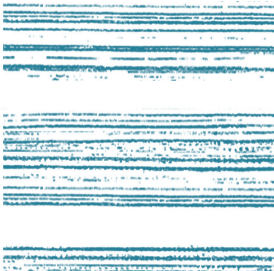
TNT/FL/07



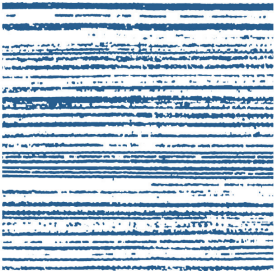
TNT/PL/08



TNT/FL/21



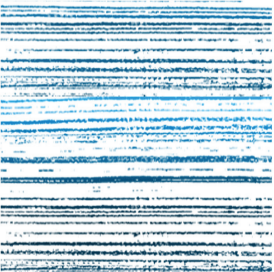
TNT/PL/22



TNT/FL/23



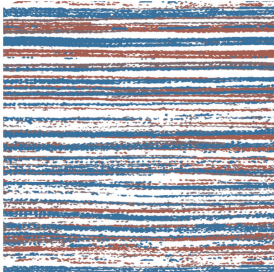
TNT/PL/24



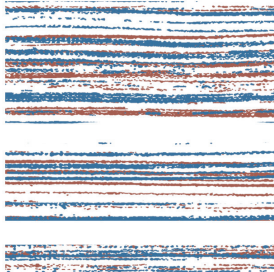
TNT/FL/09



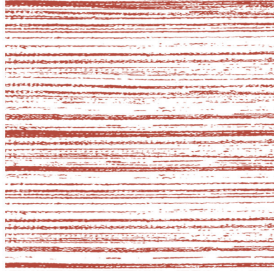
TNT/PL/10



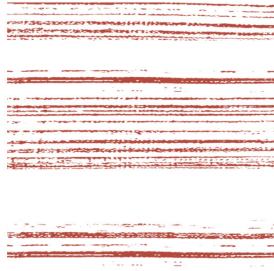
TNT/FL/11



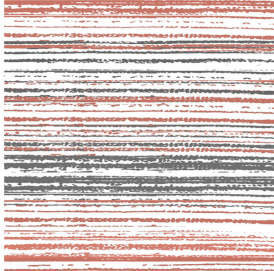
TNT/PL/12



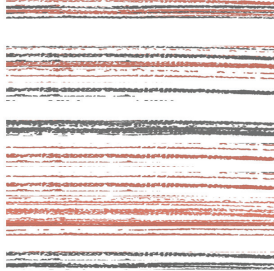
TNT/FL/05



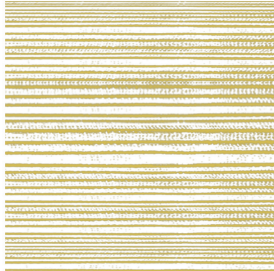
TNT/PL/06



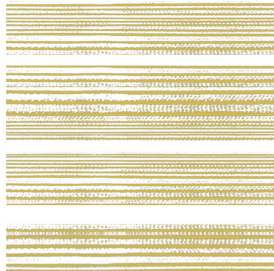
TNT/FL/03



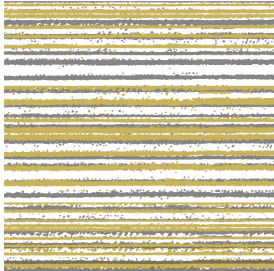
TNT/PL/04



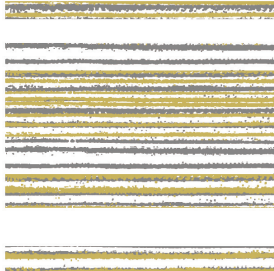
TNT/FL/15



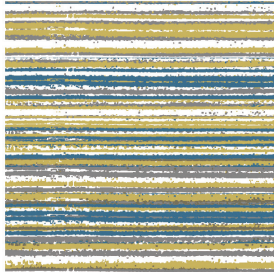
TNT/PL/16



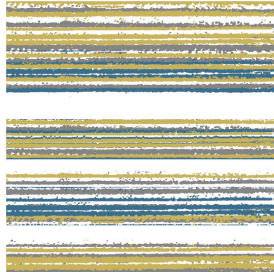
TNT/FL/17



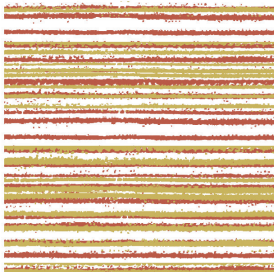
TNT/PL/18



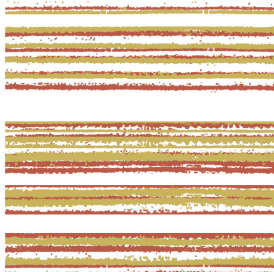
TNT/FL/19



TNT/PL/20



TNT/FL/13



TNT/PL/14

BED COVER SIZING GUIDE

IN INCHES	IN CM
KING 105" x 105"	KING 266 x 266
QUEEN 84" x 84"	QUEEN 213 x 213
SINGLE 60" x 90"	SINGLE 152 x 228



HANDPAINTED TEXTILES



‘REKHA’ HANDPAINTED CUSHION COVERS



18" x 18", 24"x24"  
TNT/CC24/BR04



18" x 18", 24"x24"  
TNT/CC18/BR01



18" x 18", 24"x24"  
TNT/CC18/BR02



18" x 18", 24"x24"  
TNT/CC24/BR03

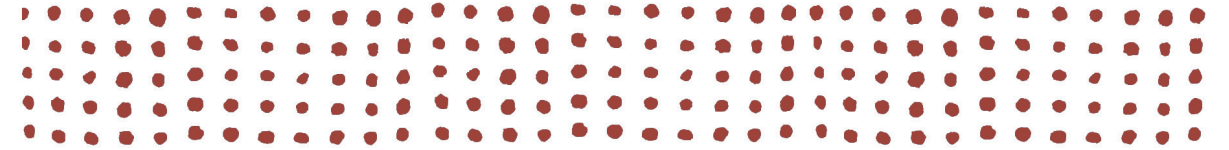
*‘The rekha cushions with their bark like textures are like bringing your favourite parts of the forest home with you and lend themselves to easy, organic living’*



## BLOCKPRINTED TEXTILES



*'Rooted in archetypal florals, paisleys, dots and stripes, but reimagined through a minimalist lens, our block printed motifs reflect a true collaboration between contemporary design and traditional craft'*



## BINDU CUSHION COVERS

*'Bindu and liti, the dot and the line — the simplest elements of mark making, form the leitmotif of this block printed and hand painted collection'*



18" x 18", 24" x 24"  
INDIGO



14" x 20"  
INDIGO



8" x 16"  
INDIGO



8" x 16"  
MADDER



18" x 18", 24" x 24"  
MADDER



14" x 20"  
MADDER





## BINDU CUSHION COVERS

*‘Our handcrafted textiles are gentle on the eyes, your skin and the planet. Kāpus fabrics are truly handmade with love, a community effort of farmers and craftspeople’*



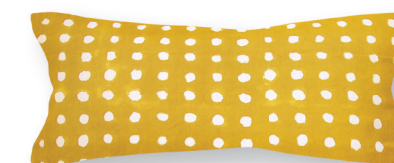
18" x 18", 24"x24"  
BLACK



14" X 20"  
BLACK



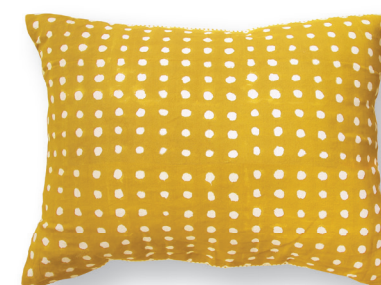
8" X 16"  
BLACK



8" X 16"  
YELLOW



18" x 18", 24"x24"  
YELLOW



14" X 20"  
YELLOW





## BINDU LITI 'AMALTAS'

*'Bindu Liti cushions inspired by the Indian Summer when iconic trees like the Amaltas and Gulmohar are in full bloom, creating majestic contrast everywhere'*



## BOBBY BINDU CUSHION COVERS

*'Each dot carefully carved, each line meticulously painted by hand, the making of Bindu-Rekha is as meditative as the atmosphere it inspires'*



18" x 18"  
GREY



18" x 18"  
YELLOW AND GREY



18" x 18"  
YELLOW AND INDIGO



18" x 18"  
INDIGO AND YELLOW





## BINDU LITI 'LAL VADALI'

*'Our palette of Indigo and Madder is evocative of various ancient dyed and mordant printed textiles we love. Working with pure elements like the dot and line in naturally derived colours, on handmade fabrics reflects a newly drawn balance of being rooted and evolving'*



## BOBBY BINDU CUSHION COVERS

*'Indigo blues and Madder rusts with a touch of contrasting vegetable dyes colour your space in rooted hues, drawing your attention without asking for it'*



18" x 18"  
INDIGO



18" x 18"  
INDIGO AND RUST



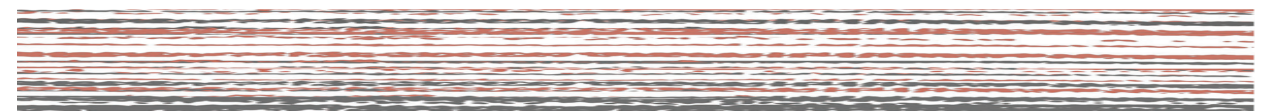
18" x 18"  
RUST





## SEEMA CUSHION COVERS

*‘Quiet and elegant, our linear patterns are designed to soothe the mind — after all your space is your sanctuary’*



18" x 18"  
INDIGO AND RED



18" x 18"  
BLACK AND RED



18" x 18", 24"x24"  
BLACK



18" x 18", 24"x24"  
BLACK AND YELLOW



18" x 18"  
INDIGO



18" x 18"  
YELLOW





## PHOOL, BINDU, BOOND

*‘This and That’s Sayya day bed made up with bindu, boond and phool cushions is a delicate balance of solid and subtle’*



## BOOND CUSHION COVERS

*‘The paisley reimaged as a tear drop in a rough hewn block print in fine proportion’*



18" x 18", 24"x24"  
BLACK



18" x 18", 24"x24"  
RED



18" x 18", 24"x24"  
INDIGO



18" x 18", 24"x24"  
YELLOW





## BINDU LITI 'LAL KALO'

*'Bindu Liti in deep charcoal and rust with white relief is joyfully influenced by tribal art. Abstract, rough hewn motifs re-composed for living today, as forest dwellers have done for centuries'*



## BINDU CHAAP CUSHION COVERS



18" x 18"  
INDIGO



18" x 18"  
RUST AND INDIGO



18" x 18"  
RUST AND BLACK



18" x 18"  
BLACK AND RUST

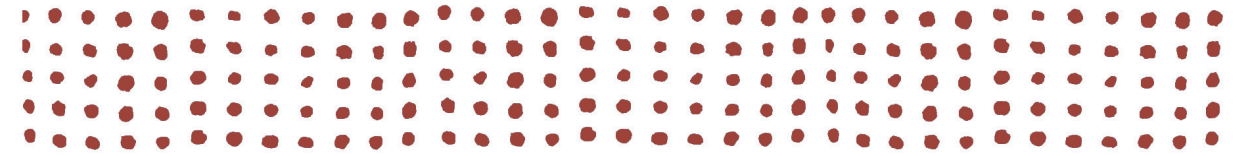


18" x 18"  
YELLOW



18" x 18"  
BLACK AND YELLOW





## PHOOL CUSHION COVERS



18" x 18", 24"x24"  
BLACK



18" x 18", 24"x24"  
RUST



18" x 18", 24"x24"  
INDIGO



18" x 18", 24"x24"  
YELLOW

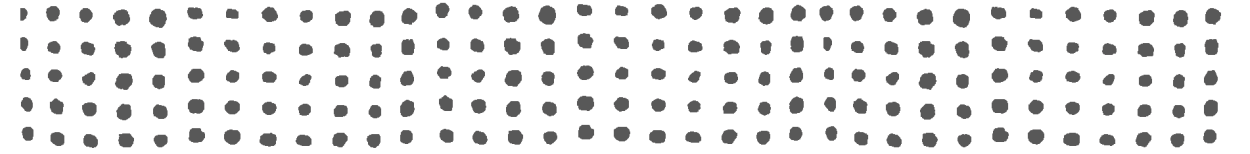
*‘Our textiles embody a fair collaboration between farmer,  
artisan and designer, drawing from generations of experience  
and contemporary thought’*





'LAL PHOOL' BED

*'The red hand printed flower is a quintessential piece of India's love affair with florals from the Mughal Era, that we carry on with us'*



PHOOL BED SHAM



10" X 30"  
BLACK



10" X 30"  
RUST



10" X 30"  
INDIGO



10" X 30"  
YELLOW





## LITI TANKA

*‘Our Liti Tanka cushions are a combination of block printed stripes with embroidery accents, adding soothing texture to your space’*



## LITI TANKA CUSHION COVERS



18" x 18"  
TNT/CC18/BPE01



18" x 18"  
TNT/CC18/BPE02



18" x 18"  
TNT/CC18/BPE03



18" x 18"  
TNT/CC18/BPE04



18" x 18"  
TNT/CC18/BPE05



18" x 18"  
TNT/CC18/BPE06





‘LITI’ BED

*‘The creation of our textiles is a unique journey of appreciation: of form, texture and symmetry, of changing seasons, of the gentle biodiversity and balance in an ecosystem’*



MIRA CUSHION COVER



18" x 18"  
BLACK



18" x 18"  
RUST



18" x 18"  
INDIGO



18" x 18"  
YELLOW





LITI CUSHION COVERS



18" x 18", 24"x24"  
BLACK



18" x 18", 24"x24"  
RUST



18" x 18", 24"x24"  
INDIGO



18" x 18", 24"x24"  
YELLOW



## THE LEAF ARCHIVE

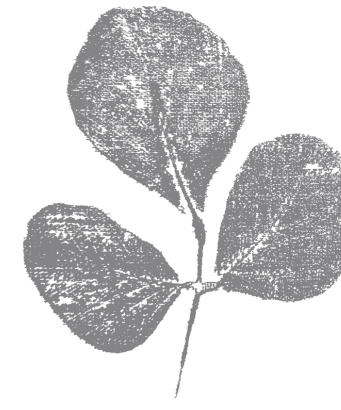


## LEAF PRINTED TEXTILES

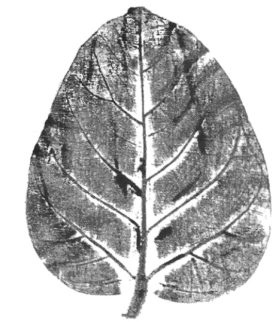
*The Leaf Archive is both a collection and a study, and the leaf, both muse and medium. Each series within documents the vegetation of a region through its leaves that are imprinted on natural fabrics. Foraging through forests, our collection begins with the indigenous and wild flora of central India'*



Malabar Nut,  
Athatoda - *Justicia  
adhatoda*



Palash, Flame of  
the Forest - *Butea  
monosperma*



Banyan - *Ficus  
benghalensis*



Kachnar - *Bauhinia  
Variegata*



Shetor - Mulberry,  
*Morus nigra*



Bordi - *Ziziphus  
Nummularia*



Flatweed, Catsear -  
*Hypochaeris radicata*



Krushnakamal,  
Passion Flower -  
*Passiflora incarnata*



Shevanti,  
Chrysanthemum -  
*Dendranthema grandiflora*



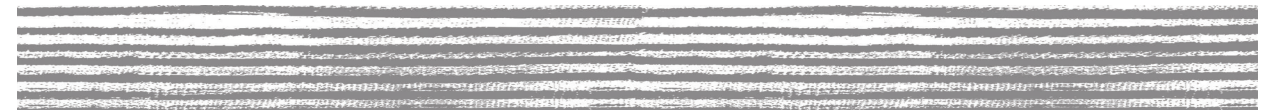
Kali Nirgudi -  
*Vitex negundo*





## LEAF PRINTED TEXTILES

*'Printing with real leaves, each unique in texture, size and character, our experimental leaf-printed textiles celebrate nature and its perfectly imperfect beauty'*



## THE LEAF ARCHIVE CUSHION COVERS

*'The leaf archive is a celebration of the forest habitat and fertility of the earth'*



18" x 18"  
TNT/CC18/ LP01

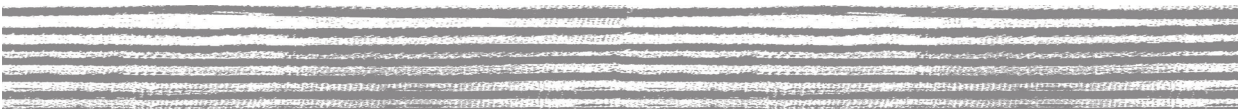


18" x 18  
TNT/CC18/ LP07



18" x 18"  
TNT/CC18/ LP02





### THE LEAF ARCHIVE CUSHION COVERS

*'Every leaf is unique, each one a different size with distinct veins and textures, changing with age and season. The imprint freezes a moment in time, capturing an inimitable impression of nature one leaf at a time'*



18" x 18"  
TNT/CC18/ LP04



18" x 18"  
TNT/CC18/ LP05



18" x 18"  
TNT/CC18/ LP03



18" x 18"  
TNT/CC18/ LP06



THE LEAF ARCHIVE NAPKIN SET



1

2

3

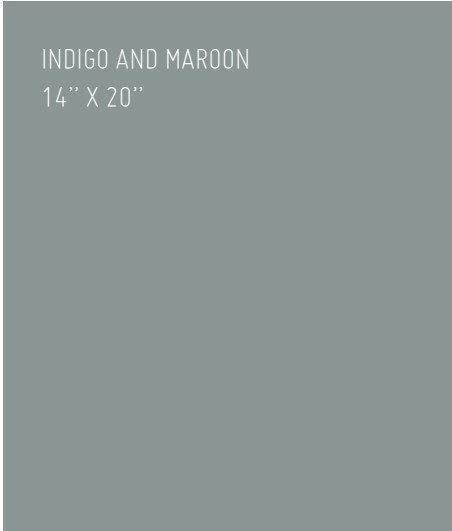
- 1. PALAASH NAPKIN
- 2. BORDI NAPKIN
- 3. BINDU BUTI NAPKIN

KAPUS NAPKINS  
SIZE :18” X 18”

HANDWOVEN TABLEMATS



SHADES OF INDIGO  
14” X 20”



INDIGO AND MAROON  
14” X 20”



GREY  
14” X 20”



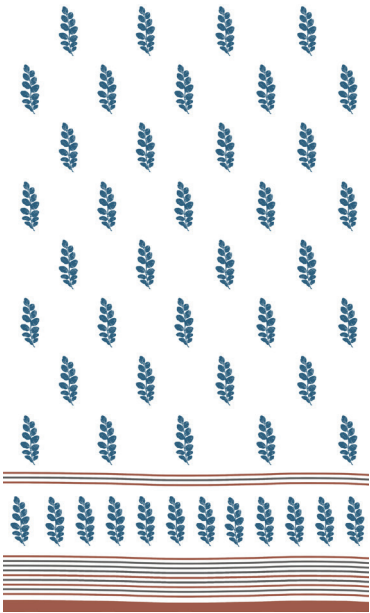
THE LEAF ARCHIVE CURTAINS



SHEVANTI IN INDIGO BLUE

'PAATRA' CURTAINS

*'Bringing forth the inherent beauty of nature with our leaf impressions'*



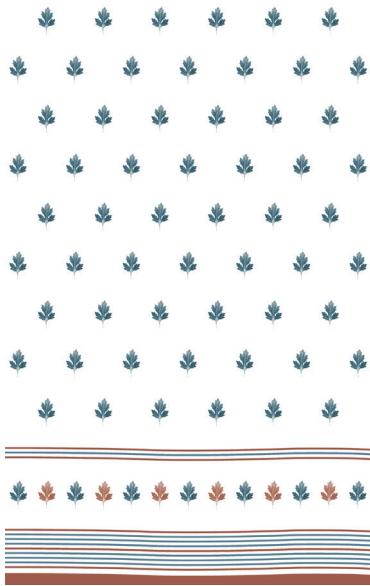
BORDI IN INDIGO BLUE



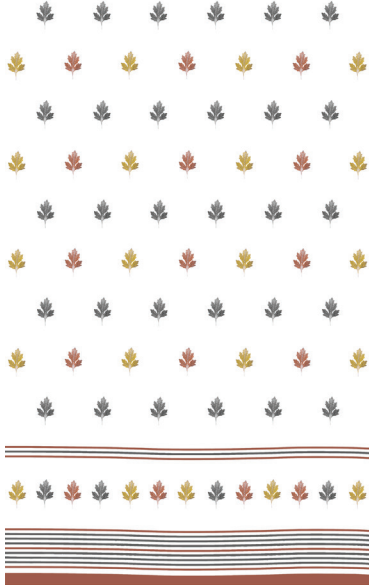
BORDI IN YELLOW, GREY AND RUST



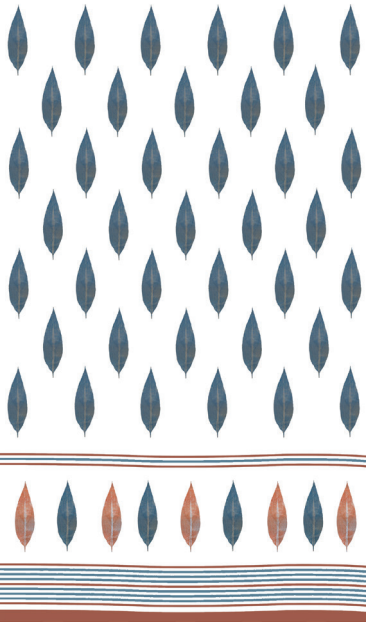
ADOOSA IN YELLOW, GREY AND RUST



SHEVANTI IN INDIGO BLUE



SHEVANTI IN YELLOW, GREY AND RUST



ADOOSA IN INDIGO BLUE



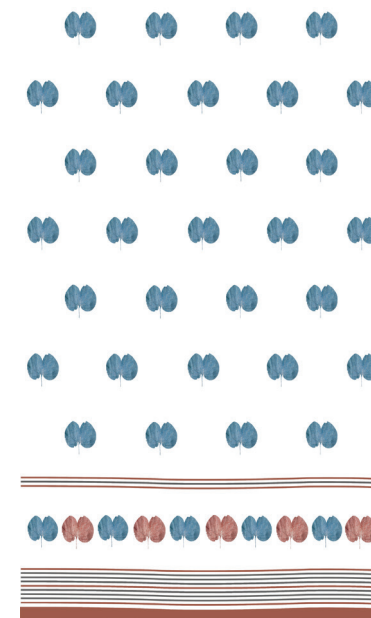
## THE LEAF ARCHIVE CURTAINS



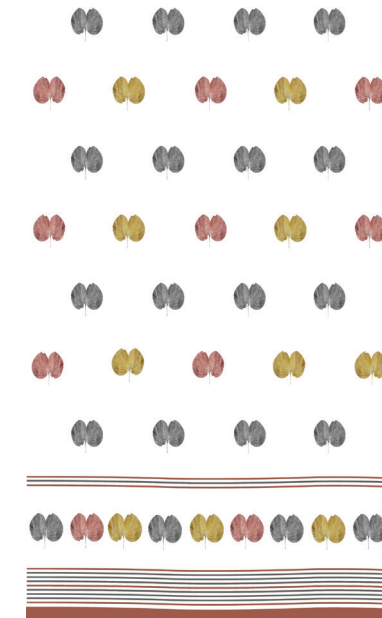
SHTUR IN YELLOW, GREY AND RUST

## 'PAATRA' CURTAINS

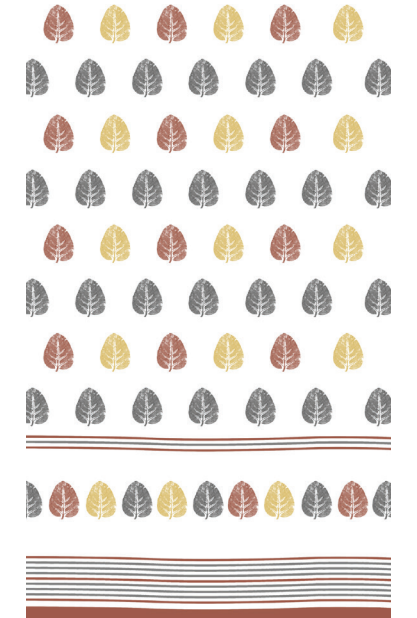
*'Printed by hand one leaf at a time on sumptuous 100's count handspun, handwoven muslin'*



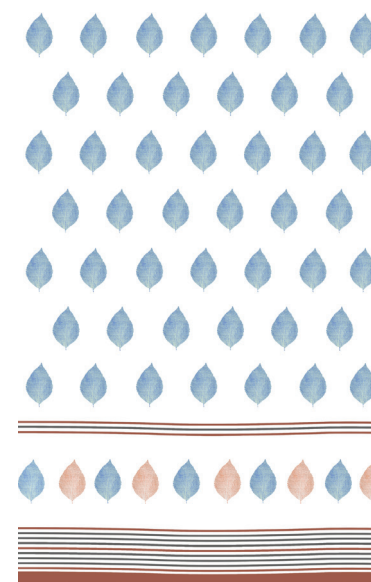
KANCHAR IN INDIGO BLUE



KANCHAR IN YELLOW, GREY AND RUST



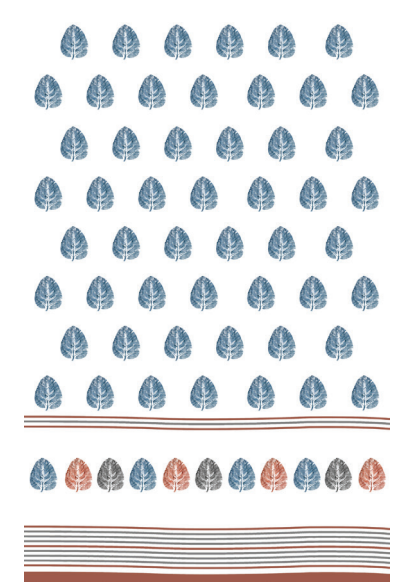
VAD IN YELLOW, GREY AND RUST



SHTUR IN INDIGO BLUE



SHTUR IN YELLOW, GREY AND RUST



VAD IN INDIGO BLUE





## The Process

*Our products are made from organically cultivated cotton which is handspun and handwoven into the most sumptuous fabric, that is intrinsically fair trade. The textile is in itself so beautiful that each product is minimally designed and made with only natural dyes and safe for the skin pigments. We have combined the age-old printing technique of block printing with experimental printing processes such as leaf printing and hand painting. The creation of these textiles is a community effort of farmers and artisans across India.*



connect@thisandthat.in  
[www.thisandthat.in](http://www.thisandthat.in)

+91 9408531000  
+91 9925025603

ahmedabad

O|P|T|I|O|N|S  
Next to Sarthi Hotel,  
Nr. Amaltas Bungalows,  
Bodakdev,  
Ahmedabad — 380054

hyderabad

Room therapy,  
885, Rd Number 45, Masthan  
Nagar,  
CBI Colony, Jubilee Hills,  
Hyderabad, Telangana 500033