



this and that
2024

Aagor Collection

furniture • textiles • rugs

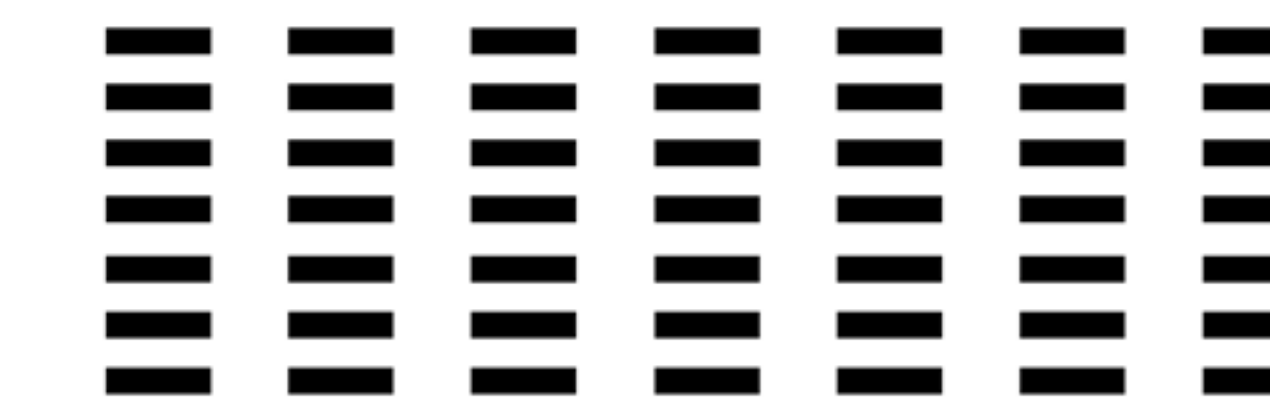
In Bodo Culture, the word *aagor* signifies a motif or a pattern. Motifs are the beating heart of this collection and have been translated across mediums and material from eri silk to wood, weaving to woodworking. Eri, a unique variety of *ahimsa* silk, gets its name from *era*, the Assamese word for the castor plant that nourishes the eri silkworm before it spins its cocoon.

The upholstery textiles for the collection have been intricately handwoven by women weavers of the Rabha and Bodo tribes in the Garo foothills of Assam using naturally dyed, handspun eri silk yarns. The patterns have been recreated in wood with an experimental inlay technique. As a change of weft marks a new shade in the fabric being woven each piece of furniture brings to the fore colour blocking in a palette of natural woods – sycamore, wenge and teak.

Drawing from stripes, textures and motifs of traditional Assamese drapes such as the Mekhala Sador, the Dokhona and Aronai of the Bodos & the Lufung, Kambang of the Rabhas is a collection of handknotted silk and wool carpets which have been composed in contemporary asymmetrical formats and large scale motifs.



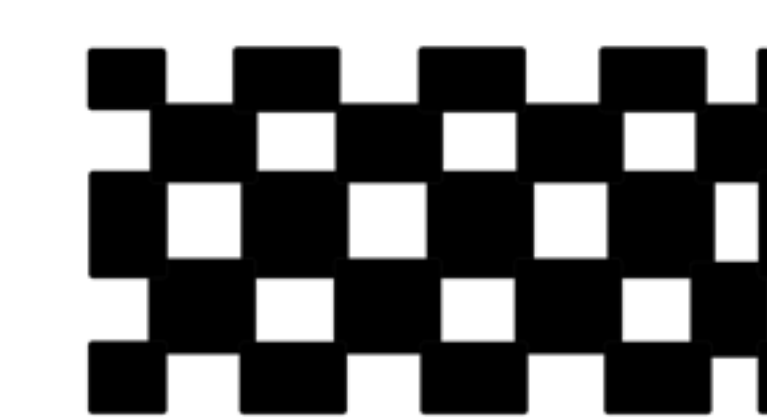
gol buti



kech



fulam



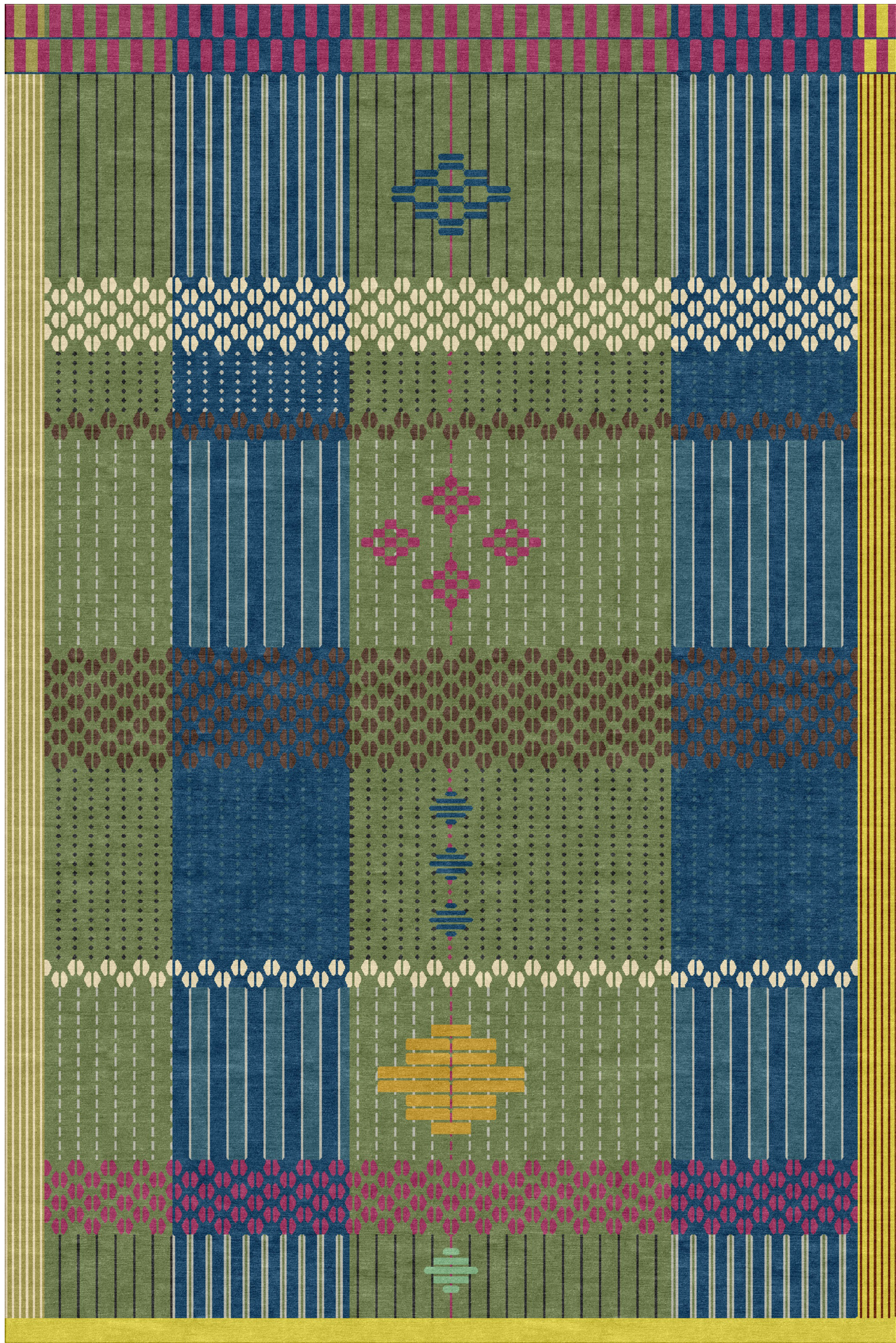
khator khura



latā



barfi



Gol Buti Carpet

6' x 9'



Gol Buti Pouf

20"Ø X 18"(H)



Gol Buti Pouf with Backrest

18"Ø X 25"(H)



Khaton Khura Bar

42"(L) X 18"(D) X (H) 72"

‘Tracing these patterns in a new, experimental inlay technique, our karigars have translated patterns with sycamore and wenge on teak wood’



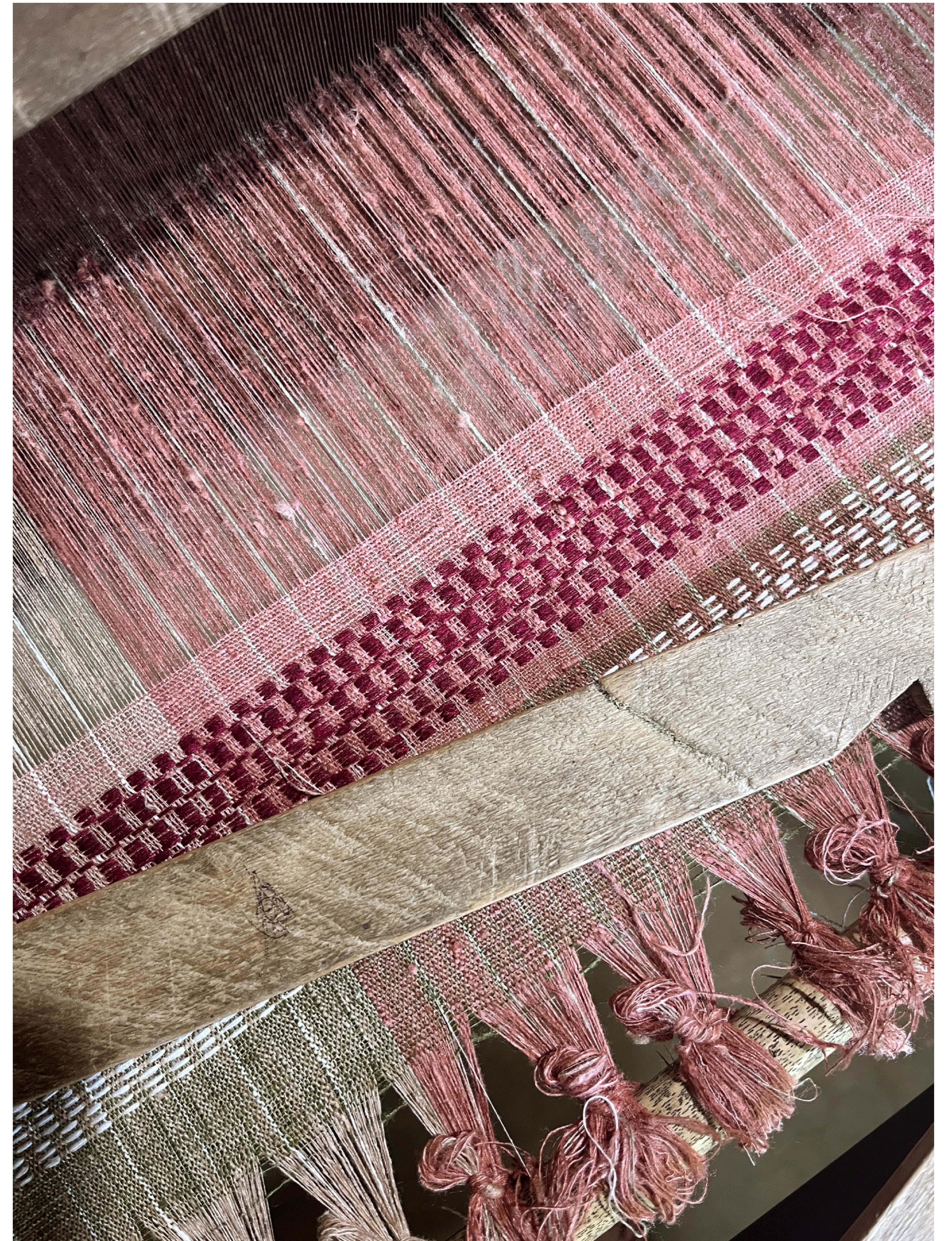
Khator Khura Console

60”(L) X 16”(D) X (H) 36”



Khator Khura Carpet

5' x 8'



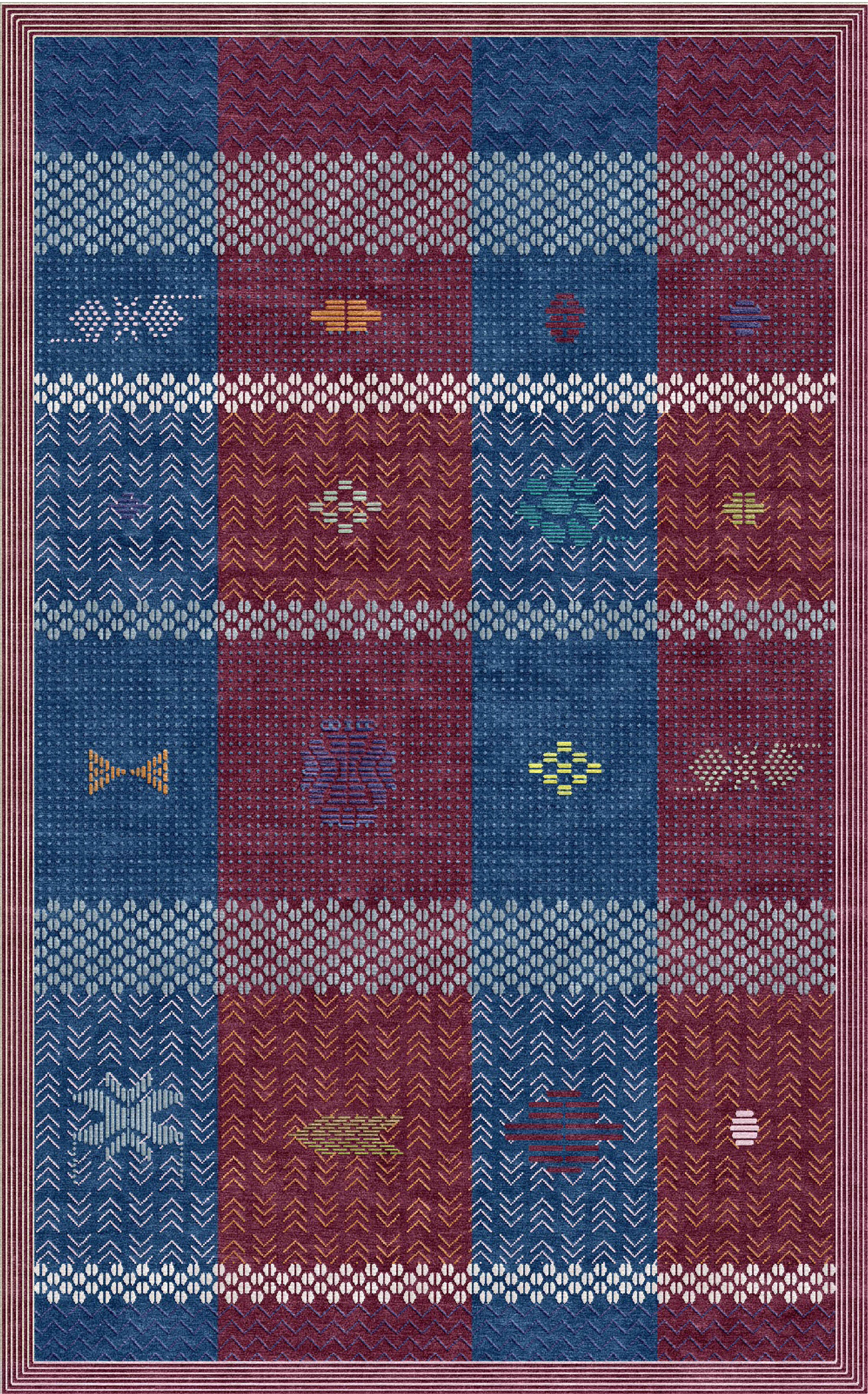
Khator Khura in Peach and Beige

45" Width



Fulam Bench

54"(L) X 21½"(D) X (H)16"



Fulam Carpet

5' x 8'



‘Connecting with a vast history of migration and bringing to the fore indigenous knowledge that has been nurtured across borders and generations’

Fulam Bench
60”(L) X 18”(D) X (H) 18”

“Furniture that bears the mark of past memory
while carrying you into a dream future”



Lata

18"(L) X 20"(D) X (H) 30½



Latā Carpet

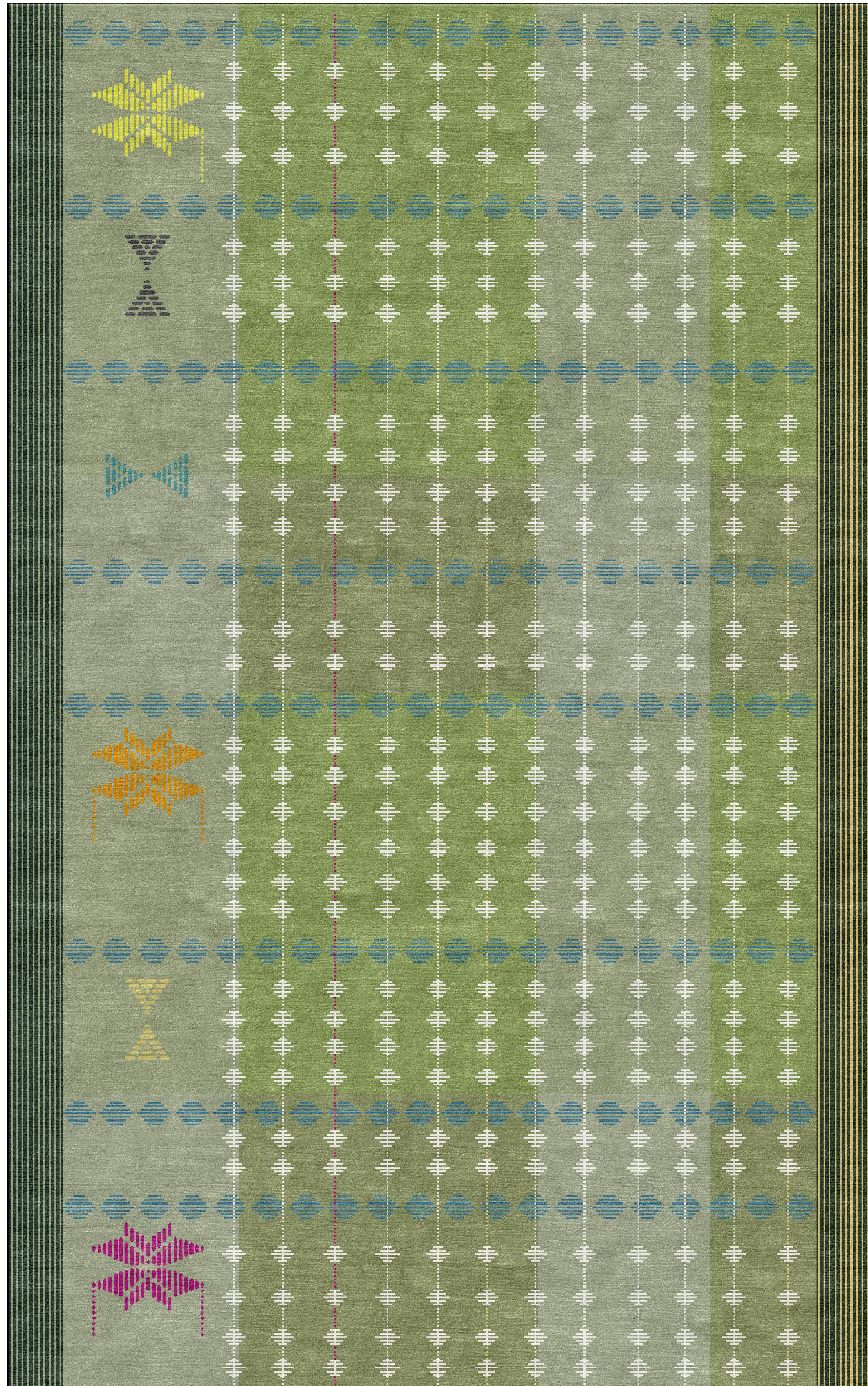
5' x 8'



‘Weaving extra weft motifs on the handloom shares a common thread with inlay, as both crafts involve the meticulous layering of elements to create intricate patterns’

Barfi Chest of Drawers

45”(L) X 18”(D) X (H) 36”



Barfi Carpet

5' x 8'



Barfi Motif, Green and Sage Green

45" Width



‘Highlights the seamless fusion of textile and wood artistry, symbolizing the unity of craftsmanship across diverse mediums’

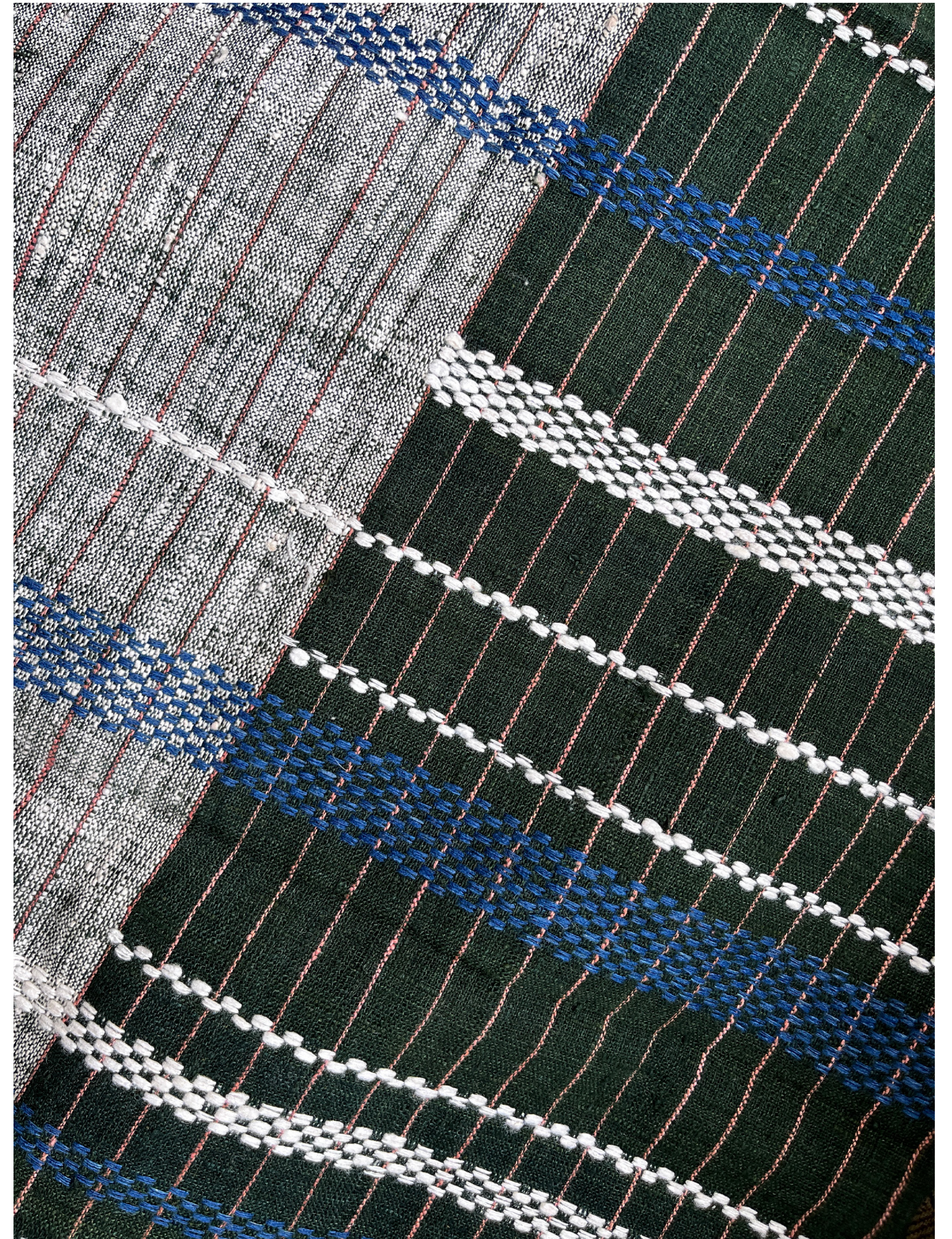
Kech Coffee Table

36”(L) X 36”(D) X (H) 16”



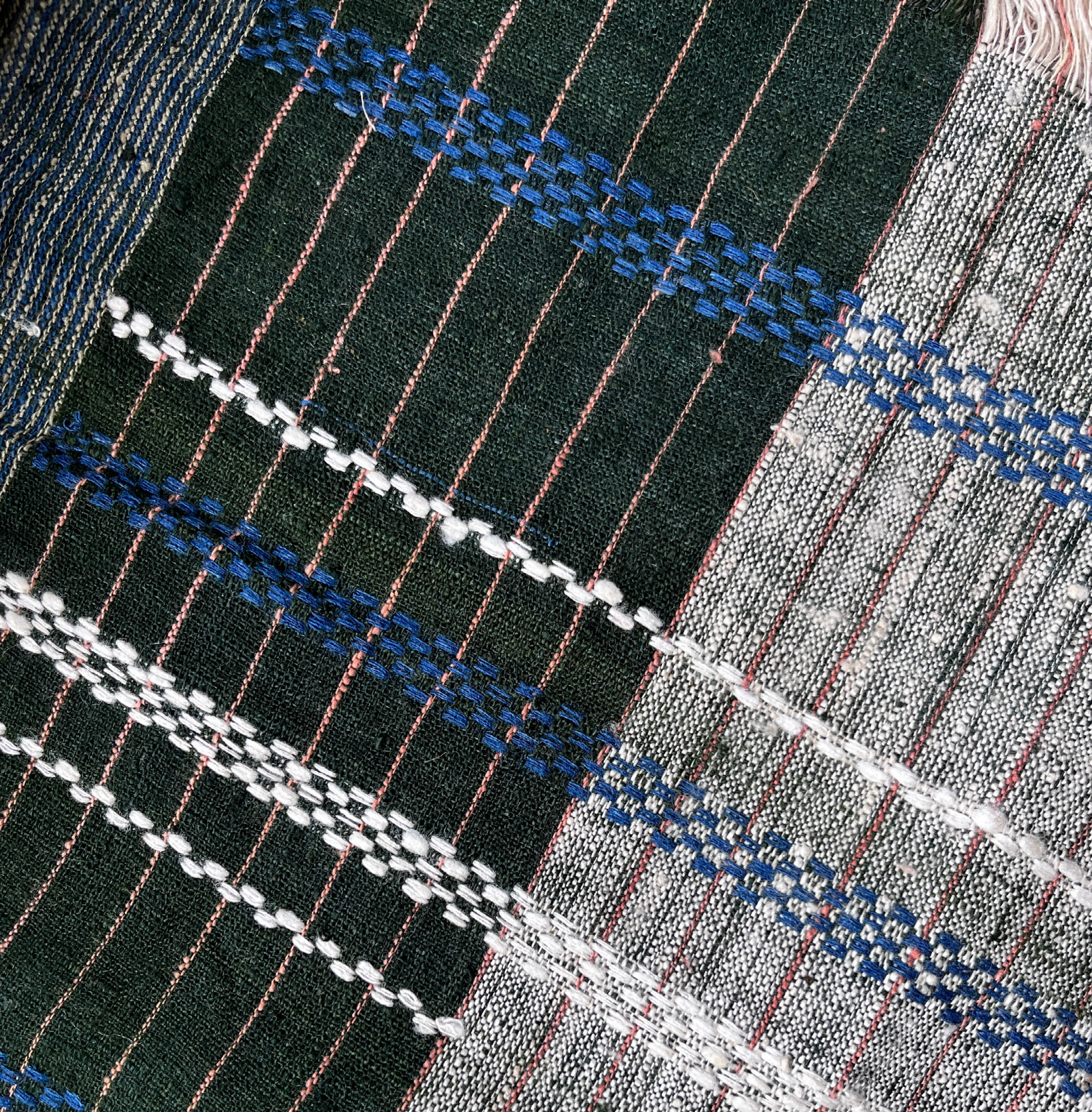
Kech Carpet

5' x 8'



Kech in White and Forest Green

45" Width



www.thisandthat.in



This and That
Ahmedabad, India
+91 9408531000
connect@thisandthat.in